

Life-wide Learning Report (Trip to Castle Peak Power Station)

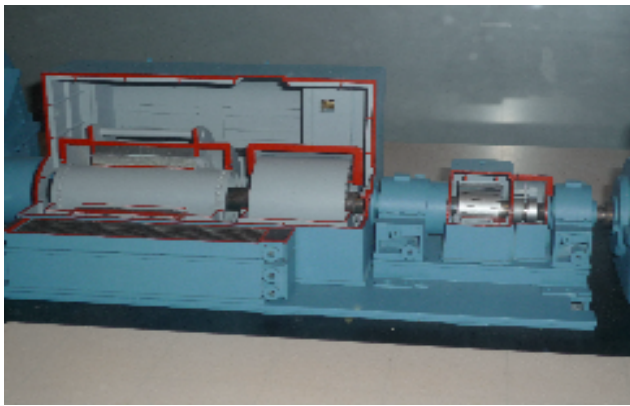
Name: Ngan Yik Yin

Class: 7S



The visit of Castle Peak Power Station tells us a lot that are not appeared in the textbooks. In the school, we focus on how it is done and what the principle is behind. Here it shows me the practical considerations when generating electricity.

In fact, the toughest problem of a power plant is how to perform everything smoothly and economically because the aim of a power station is providing a continuous, reliable and cheap electricity supply. Every engineer in the power plant racks their brains controlling the cost and causing less pollution. I think it is a important topic among the theories of science.



these are the models showing the generators and the engines



Do you know how to transfer the coal from the storing site to the combustion chamber? By car! Of course not! But it is the answer of students. The answer given by engineers is to use a conveyor belt.

Apart from that, one of the most surprising idea or I consider it is the most money saving method is transferring the coal by the exhausted hot gas generated by the pervious combustion. The gas can service as a transferring agent, also it heat up the coal and dry it before entering to the chamber so that less amount of energy is wasted to do so.

From the above example, I learn that the principles and theories in science are not the most important part, indeed, how to use them tactically is

more essential.