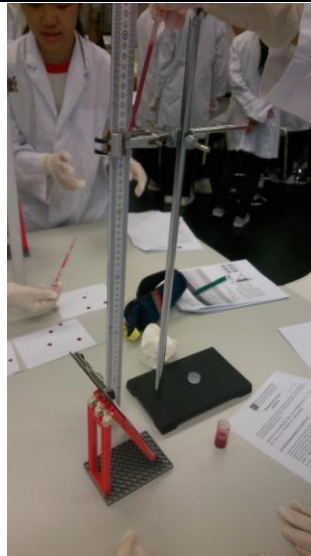


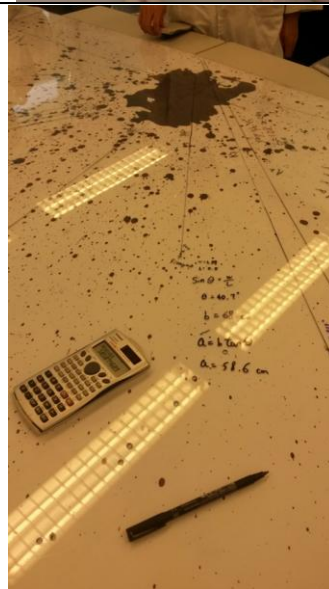
Life-wide Learning Sharing (6C & 6D)

NG TSZ YING



This is an experiment showing the effect of different angles of impact on the shape of bloodstain. With greater angle of impact, bloodstain will be more elongated in shape.

FUNG OI YING



This is an interesting activity which includes lots of experiments. It would appeal to the students who study physics, chemistry or biology as it helps them know more about science.