



LWL Assignment (5X)

5B	LAU KA YEE		<p>There are different levels of clouds which are stratus, altocumulus, and cirrus. Stratus is low level cloud which is grey layer and may have light rain. Altocumulus is medium level which is in the form of round masses or rolls and normally produce no rain. Lastly, cirrus is high level which is composed of ice crystals with a hair-like appearance.</p>
5C	CHEN WAI YIP		<p>This is automatic upper-air sounding system. At 8am and 8pm every day. The balloon will be released and it will carry the radiosonde. Different weather information will be measured.</p>

5C WONG SAU MAN



these photos showed different kinds of cloud in sky .
there height in the sky were different.

5D CHONG WING YAN



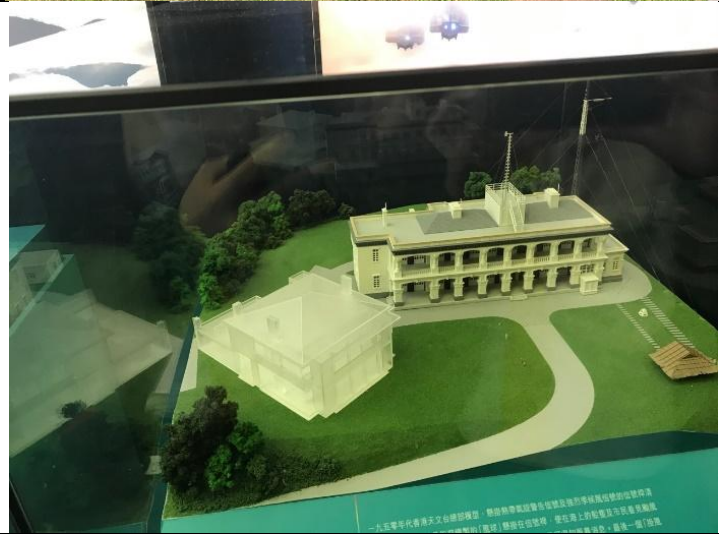
In this picture, there are four large typhoon signal
models which were used to be suspended on the
typhoon day in the past time.

5D HUANG SHIQI



I was surprised that there are several giant metal models to represent the typhoon warning which would be suspended on the tower to tell people about the weather

5D PUT TSZ CHING



This picture is the model of Hong Kong Observatory's building in the 1950s which shows people at that time would hang the signal of typhoon on the signal pole.

5D YE NGA MAN



This picture is mainly about different types of clouds.
For example, altocumulus.